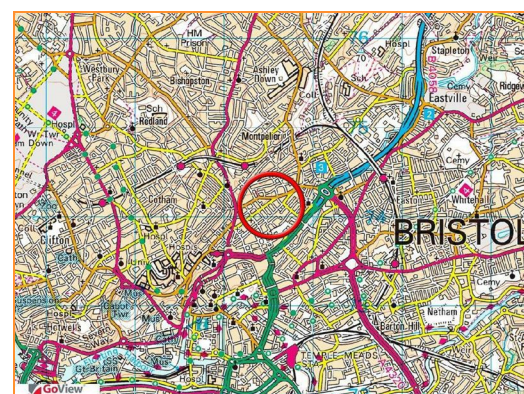
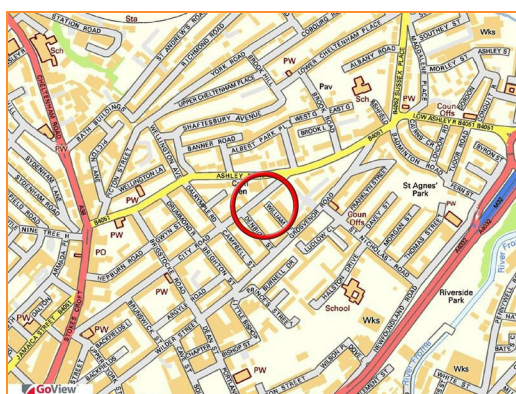




**152B City Road, St. Pauls, Bristol, BS2 8YG**

**Sold @ Auction £171,000**

Hollis Morgan APRIL AUCTION LOT NUMBER 2 - A large two bedroom MAISONETTE ( 851 Sq Ft ) situated over HALL and BASEMENT level with share of rear GARDEN - now requires UPDATING



# 152B City Road, St. Pauls, Bristol, BS2 8YG

## FOR SALE BY AUCTION

SOLD @ AUCTION £171K  
GUIDE PRICE £125K  
APRIL AUCTION TOTAL SALES £8.5m

LOT NUMBER 2  
Wednesday 20th April 2016  
All Saints Church Pembroke Road, Clifton, Bristol BS8 2HY  
Legal packs will be available for inspection from 18:00.  
The sale will begin promptly at 19:00

## SOLICITORS

Kevin Froud  
Legal Services  
Bristol City Council  
Parkview Campus, PO Box 3176, Bristol, BS3 9FS  
DX 7827 Bristol  
Tel: 0117 92 22932  
kevin.froud@bristol.gov.uk

## ONLINE LEGAL PACKS

Please visit the Hollis Morgan Website and select the chosen lot from our Current Auction List. Legal Packs are free to download from Hollis Morgan. Follow the RED link to "Download Legal Packs" For the first visit you will be required to register simply with your email and a password. Having set up your account you can download legal packs or register to receive them if not yet available. You will be automatically be updated if any new information is added.

## THE PROPERTY

A two bedroom maisonette ( 851 Sq Ft ) situated over hall and basement level with share of rear garden.

Includes Freehold.

Private leaseholder in flat above.

## LOCATION

City Road lies within the cultural suburb of St. Pauls. Stokes Croft is within close proximity and offers a wide variety of independent retailers, convenience stores, pubs, bars, cafes and restaurants. Broadmead and Cabot Circus are also within walking distance.

## THE OPPORTUNITY

Now in need of updating but will make a fine home or investment in this highly sought after location. Potential to split into 2 flats subject to consents.

## RENTAL APPRAISAL

The local lettings experts say:  
The Bristol Residential Letting Co. is confident this property would make a good rental investment. Don McKeever of The Bristol Residential Letting Co suggests a rent in the region of £850 - £900pcm will be achievable if refurbished for the professional market. If you would like to discuss more detail on the potential for rental, you can call Don (0117 370 8818) for a no obligation discussion. He will be very happy to advise on maximising the return on this property.

## EPC

For full details of the EPC please refer to the online legal pack.

## BUYER'S PREMIUM

Please be aware all purchasers are subject to a £750 + VAT buyer's premium which is ALWAYS payable upon exchange of contracts whether the sale is concluded before, during or after the auction date.

## GUIDE PRICE

An indication of the seller's current minimum acceptable price at auction. The guide price or range of guide prices is given to assist consumers in deciding whether or not to pursue a purchase. It is usual, but not always the case, that a provisional reserve range is agreed between the seller and the auctioneer at the start of marketing. As the reserve is not fixed at this stage and can be adjusted by the seller at any time up to the day of the auction in the light of interest shown during the marketing period, a guide price is issued. This guide price can be shown in the form of a minimum and maximum price range within which an acceptable sale price (reserve) would fall, or as a single price figure within 10% of which the minimum acceptable price (reserve) would fall. A guide price is different to a reserve price (see separate definition). Both the guide price and the reserve price can be subject to change up to and including the day of the auction.

## RESERVE PRICE

The seller's minimum acceptable price at auction and the figure below which the auctioneer cannot sell. The reserve price is not disclosed and remains confidential between the seller and the auctioneer. Both the guide price and the reserve price can be subject to change up to and including the day of the auction.

## AUCTION BUYERS GUIDE VIDEO

We have short video guides for both buying and selling by Public Auction on the Hollis Morgan Website. If you have any further questions regarding the process please don't hesitate to contact Auction HQ.

## TESTIMONIALS

We are very proud of what our past clients have say about us - please visit the Hollis Morgan website to read their testimonials.

## CHARITY OF THE YEAR

Hollis Morgan are supporting Home Start Bristol as our 2016 Charity of the year. We are delighted to announce that 10% of every buyer's premium will be donated to this excellent local charity – Home-Start Bristol provides a unique kind of help which has a profound impact on struggling families with young children, 98% of those who finished a period of support reported that their wellbeing had increased. If you would like to find out more about Home-Start Bristol and how you can support us please visit our website [www.homestartbristol.org.uk](http://www.homestartbristol.org.uk)

Energy Efficiency Rating		Current	Potential
Very energy efficient - lower running costs			
(92 plus) A			
(81-91) B			
(69-80) C			
(55-68) D			
(39-54) E			
(21-38) F			
(1-20) G			
Not energy efficient - higher running costs			
England & Wales		EU Directive 2002/91/EC	

Environmental Impact (CO <sub>2</sub> ) Rating		Current	Potential
Very environmentally friendly - lower CO <sub>2</sub> emissions			
(92 plus) A			
(81-91) B			
(69-80) C			
(55-68) D			
(39-54) E			
(21-38) F			
(1-20) G			
Not environmentally friendly - higher CO <sub>2</sub> emissions			
England & Wales		EU Directive 2002/91/EC	

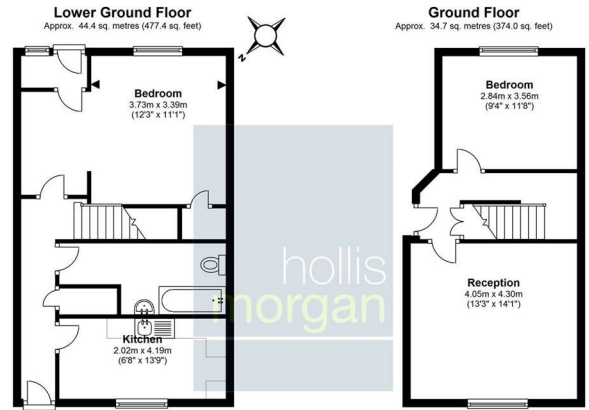


Illustration for identification purposes only, measurements are approximate, not to scale.

Floorplan Produced by Westcountry EPC  
Plan produced using PlanUp.  
152b City Road, BRISTOL



e-mail: [post@hollismorgan.co.uk](mailto:post@hollismorgan.co.uk) [www.hollismorgan.co.uk](http://www.hollismorgan.co.uk)

9 Waterloo Street, Clifton, Bristol BS8 4BT. Telephone: 0117 973 65 65

Hollis Morgan Property Limited, registered in England, registered 7275716. Registered address, 5 Upper Belgrave Road, Clifton, Bristol BS8 2XQ